

Anabran

Catalogue of works

Anabran is an exhibition of collagraph prints examining the artists environment along the creek and river systems of the Strathbogie Ranges and beyond.

The beginning of the 2020s in north-east Victoria was marked by a series of unseasonal and extreme rain events. There were major floods and high levels of summer rainfall. This exhibition explores the nation of water and rain becoming swollen streams and vast lake systems.

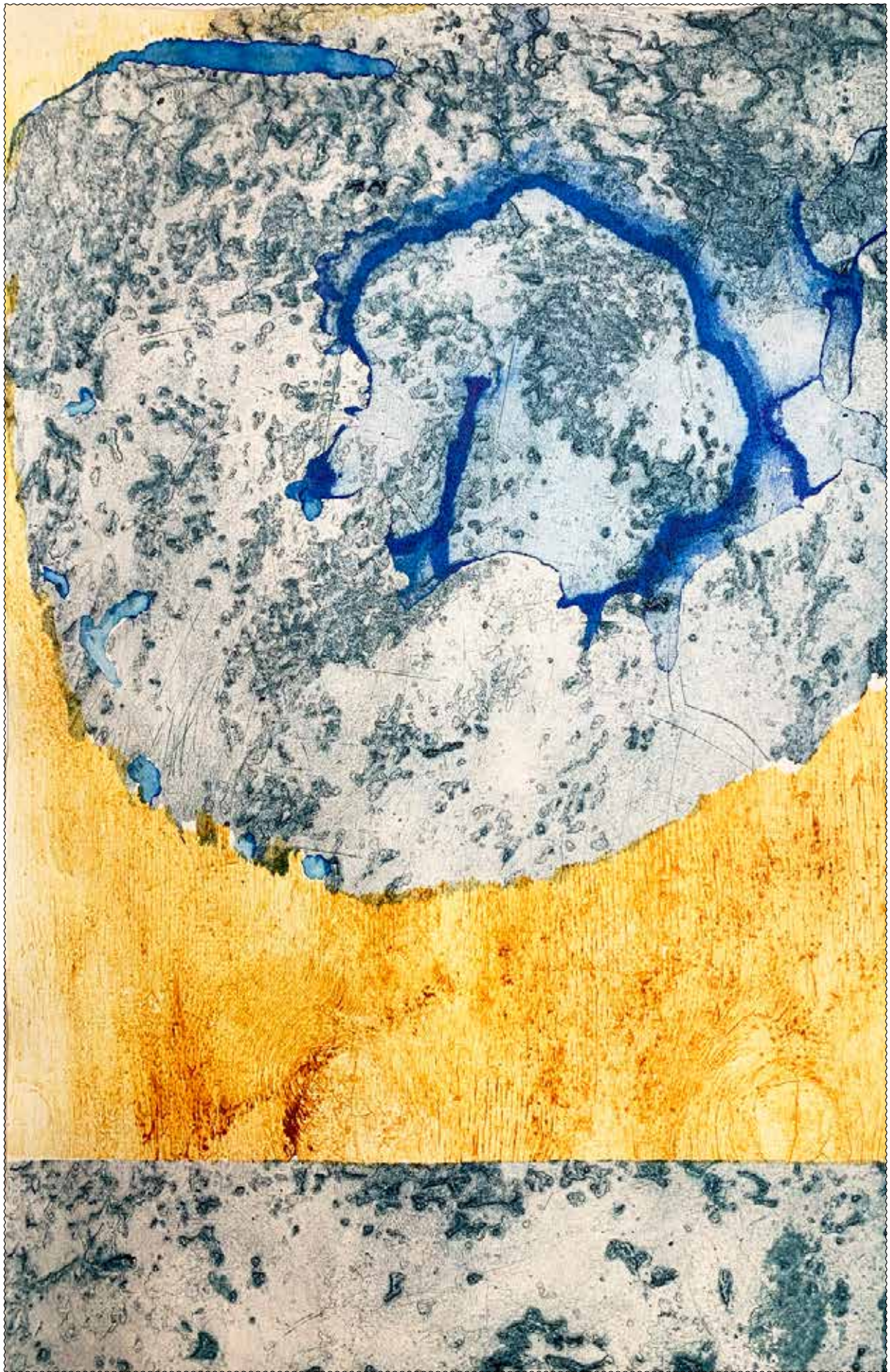


Becoming the Lake I by Angus Cameron

1 Kibble Lane, Avenel, Victoria, 3664
nomad@nomadart.com.au
www.nomadart.com.au
0415 912 115



We acknowledge that we are on the traditional lands of the Taungurung people and pay our respects to their Elders past and present.



Angus Cameron, *Becoming the Lake X*, collagraph, 72 x 52 cm, unframed \$1350



Angus Cameron, *Becoming the Lake XI*, collagraph, 80 x 40 cm, unframed \$1350



Angus Cameron, *Becoming the Lake I*, collagraph, 80 x 40 cm, unframed, \$1250



Angus Cameron, *Becoming the Lake II*, collagraph, 80 x 40 cm, unframed, \$1250



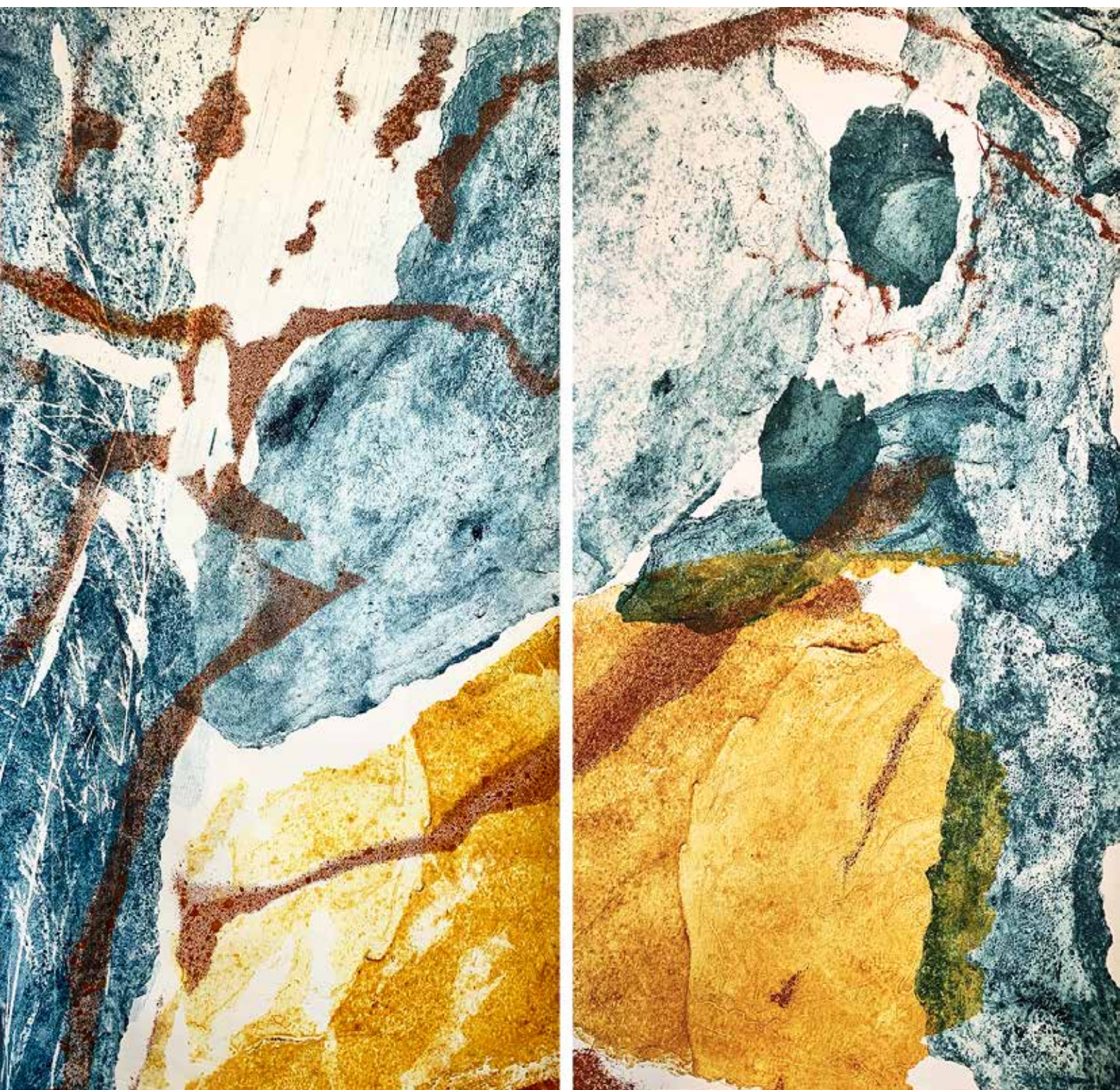
Angus Cameron, *Becoming the Lake I & II*, collagraph, 80 x 80 cm, unframed \$2200



Angus Cameron, *Becoming the Lake III*, collagraph, 80 x 40 cm, unframed, \$1250



Angus Cameron, *Becoming the Lake IV*, collagraph, 80 x 40 cm, unframed, \$1250



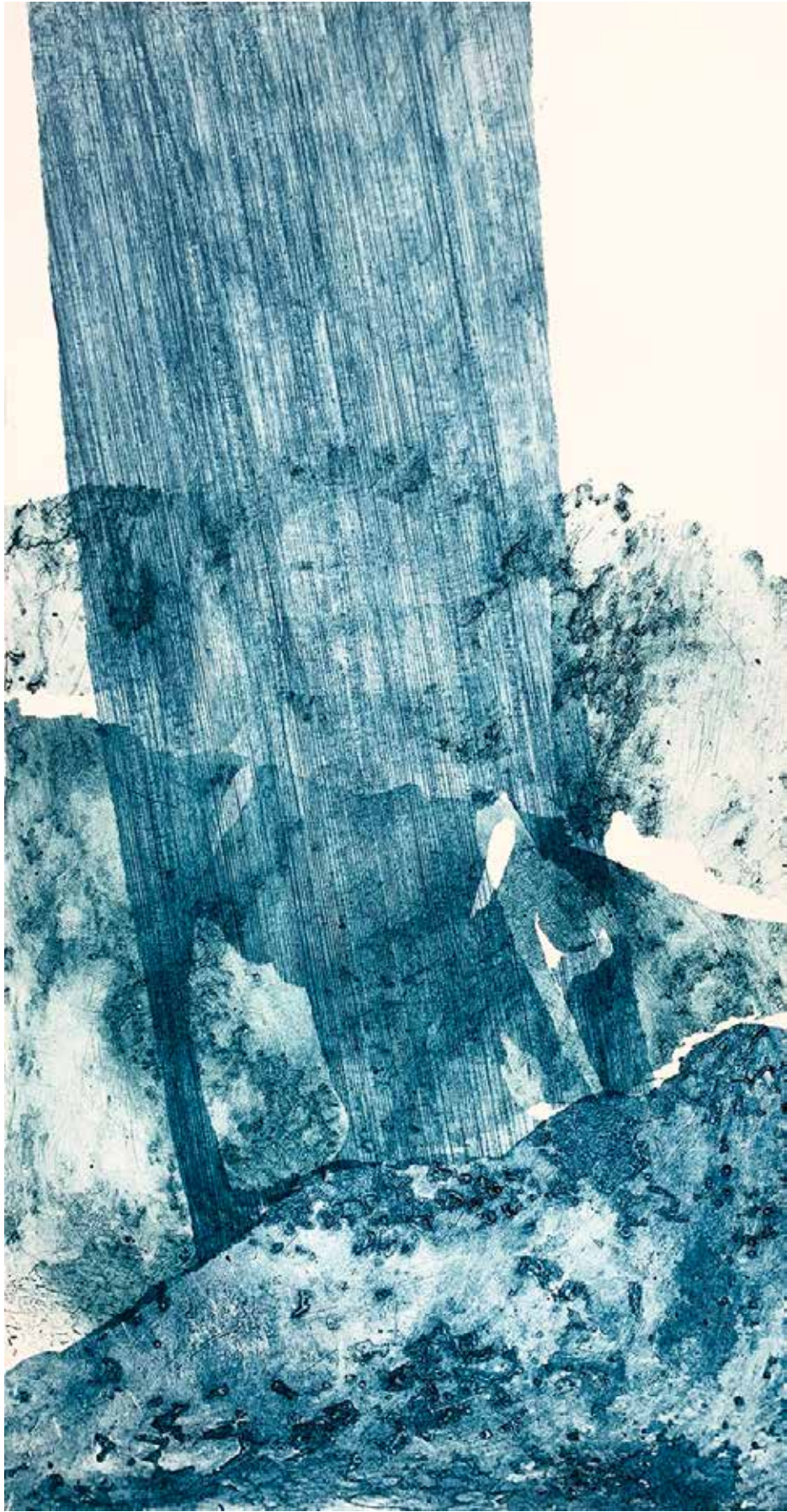
Angus Cameron, *Becoming the Lake III & IV*, collagraph, 80 x 80 cm, unframed, \$2200 17



Angus Cameron, *Becoming the Lake V*, collagraph, 80 x 40 cm, unframed, \$1250



Angus Cameron, *Becoming the Lake VI*, collagraph, 80 x 40 cm, unframed, \$1250



Angus Cameron, *Becoming the Lake VII*, collagraph, 80 x 40 cm, unframed, \$1250



Angus Cameron, *Becoming the Lake VIII*, collagraph, 80 x 40 cm, unframed, \$1250



Angus Cameron, Becoming the Lake IX, collagraph, 80 x 40 cm, unframed, \$1250

Angus Cameron

Based in Avenel in northeast Victoria, Angus Cameron makes prints and impressions on paper that reflect the environment where he lives. His works embody aesthetics found in nature, echoing forms and patterns that make up the micro and macro world of plants and place. The work sits in a space between abstraction and representation. It is a filtered gaze reflecting the patterns and shapes of the land and the life it supports.

Angus resided in Darwin from 1997 to 2019 and has extensive experience in art education, project management, curating and arts Industry development. In 2005 Angus established Nomad Art Productions in partnership with his wife Rose. Nomad Art is well known for facilitating unique projects that foster cross-cultural collaborations with artists nationally. These curated exhibitions promote collaboration, reconciliation and understanding and with an educational focus.

Angus relocated to Victoria in 2019 and established a print making studio at his home in Avenel, allowing him to focus once again on his own artwork.

1 Kibble Lane, Avenel, Victoria, 3664
nomad@nomadart.com.au
www.nomadart.com.au
0415 912 115, or 0428 308 793

